

# Press Release Vol. 2

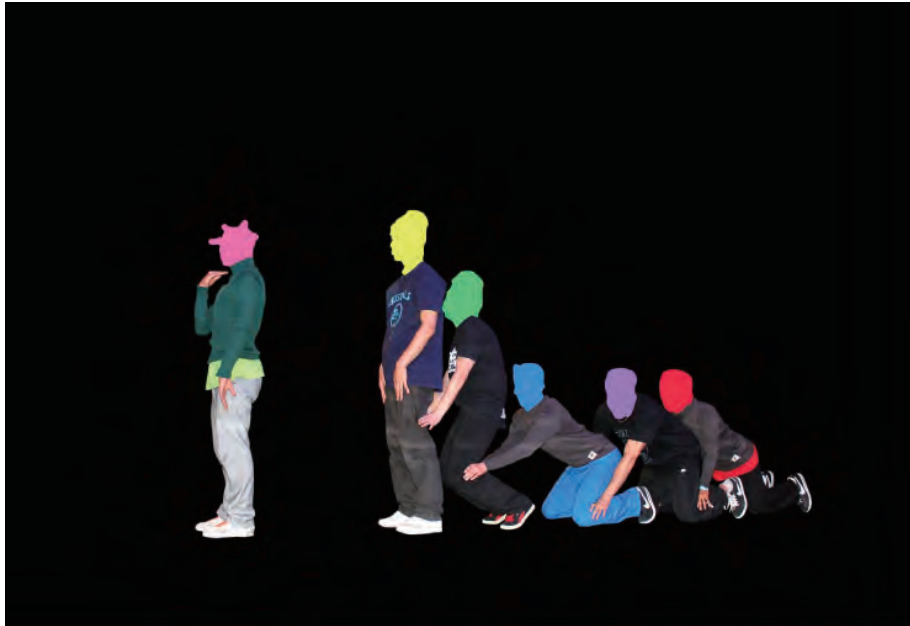
April 2, 2026

TO MEMBERS OF THE MEDIA



## KG+2026 Exhibition Line-up Announced Satellite Event of KYOTOGRAPHIE International Photography Festival

Over 200 exhibitions and more than 300 participating artists across Kyoto



© SEO MINKYUNG=The Gestures

KYOTOGRAPHIE is pleased to announce the full exhibition program of KG+2026, the open-call photography festival held as the official satellite event of the KYOTOGRAPHIE International Photography Festival. The festival will take place from Saturday, April 18 to Sunday, May 17, 2026, across various locations throughout Kyoto. Launched in 2013, KG+ has developed into an international platform that brings together emerging and established photographers from around the world. Now in its 14th edition, KG+2026 will take place across the entire city of Kyoto, presenting over 200 exhibitions at approximately 150 venues, with more than 300 participating artists—marking its largest edition to date. Exhibitions unfold not only in galleries, but also in cafés, temples, shrines, hotels, and public spaces, transforming Kyoto into a dynamic stage for contemporary photographic expression.

The program is composed of three main components:

KG+SELECT – a competition-style exhibition featuring ten finalists selected by a jury;  
KG+SPECIAL – exhibitions realized in collaboration with corporate partners and sponsors;  
and over 180 exhibitions selected through an open call.

Among the open-call exhibitions, two categories—KG+ for Collectors and KG+ PICK UP—highlight selected exhibitions of particular interest. Together, these programs showcase the diversity and vitality of contemporary photography.

### For enquiries please contact

KG+ PR Office

**Ayaka Itoh (KG+ Program Manager)**  
press\_kgplus@kyotographie.jp  
Mobile +81 80 5490 0409

International

**Catherine & Prune Philippot**  
cathphilippot@relations-media.com  
Office +33 1 40 47 63 42

**Marguerite Paget**  
marguerite.paget@kyotographie.jp  
Mobile +81 90 6556 1974

Website <https://kgplus.kyotographie.jp>

Instagram @kgplus Facebook @KGplusevent X @kgplus\_kyoto

Office Address

672-1 Kueninmae-cho Nakagyo-ku Kyoto 604-0993 Japan

April 2, 2026

# EXHIBITIONS

KG+2026 presents over 200 exhibitions, including KG+SELECT and KG+SPECIAL. Among these, more than 180 exhibitions selected through an open call will be held across various locations throughout Kyoto. From these open-call exhibitions, selected highlights will be presented under the categories “KG+ for Collectors” and “KG+ PICK UP.” Exhibitions will take place not only in galleries, but also in cafés, temples, shrines, and outdoor spaces across the city.

**KG+SELECT:** A competition exhibition featuring ten finalist artists selected by an international jury.

**KG+SPECIAL:** Exhibitions organized or co-organized by corporate partners and sponsors.

**KG+ for Collectors:** Exhibitions featuring works intended for collectors.

**KG+ PICK UP:** Selected exhibitions highlighted by KG+.

## KG+SELECT Supported by Sigma

KG+SELECT is an open competition first launched in 2015 as part of the awards division of KG+. From entries gathered from around the world, 10 artists are selected by an international jury. Each artist receives a ¥200,000 production grant and is invited to the group exhibition (KG+SELECT Group

Exhibition). Following the group exhibition, one artist will be selected to win the KG+SELECT Award. They will receive a ¥500,000 encouragement prize and the opportunity to exhibit in the main program of KYOTOGRAPHIE International Photography Festival the following year.

This step-up award has become an important platform for emerging international talent. This year, the program received a record number of applications, bringing together a diverse group of artists from around the world.

## KG+SELECT 2026 Finalists

•Hyunmin Ryu

•Sridhar Balasubramaniyam

•Chaofan Wan

•Hiroyoshi Taira

•Mila Rae Sarabhai

•Seo Minkyung

•Piotr Zbierski

•Kim Eun Ju

•Aya Kishimoto

•Sohei Nakanishi



© SoheiNakanishi=UrbanParadise\_I am not taxidermy



© Sridhar\_Balasubramaniyam=Manarsuzhal



© PiotrZbierski=SolidMaze

### 「KG+SELECT 2026」 Group Exhibition

**Venue:** Kurochiku Makura Building

**Dates:** Saturday, April 18 to Sunday, May 17, 2026

**Time:** 10:30–18:30 (Last entry 18:00)

**Sponsor:** Sigma Corporation

### KYOTOGRAPHIE × KG+ Award Ceremony 2026

A ceremony will be held to announce the KG+SELECT Award winner chosen from the ten finalists.

**Venue:** Ace Hotel Kyoto Ballroom

**Dates:** Sunday, April 19, 2026

**Time:** 19:30 (Doors open 19:00)

April 2, 2026

KG+SPECIAL features exhibitions organized in collaboration with sponsors and partner organizations. Through curatorial support and partnerships with companies and institutions, these exhibitions enable artists to realize larger-scale projects and unique site-specific presentations

## KG+SPECIAL S01

### Sigma Lounge

The Sigma Lounge welcomes visitors with the return of the popular Photo Library, where you can explore a curated collection of photobooks, including two titles published by the Sigma Foundation, Hanataba and Songen. This year, the lounge also offers a hands-on opportunity to experience Sigma's cameras and lenses. Visitors are invited to pick them up, try them out, and get a closer feel for Sigma's design and craftsmanship. On weekends, the space will host talk events and special programs. Sigma Water will also be distributed, so please feel free to stop by and take a break. Through photobooks, discussions, and hands-on product experiences, discover Sigma's current activities from a variety of perspectives.

**Venue: O-DEN Gallery**

38-1 Koromonotana-cho, Nakagyo-ku, Kyoto

Open: 4/18 Sat.-5/17 Sun. 11:00-18:00

Closed: Mondays \*Open 5/4

Admission: Free

Organizer: Sigma Corporation



©Sigma

## KG+SPECIAL S02

### César Guardia Alemañi, Claudia Guadarrama, Gianluca Lanciai, Moe Suzuki, Reinis Hofmanis, SHIFT80(Miggy Sakata, Ryo Masachika, Mai Katada), Various Artists GFX Challenge Grant Program2024 × KG+ DISCOVERY Award 2025



©FUJIFILM Corporation

This exhibition is a collaborative presentation between Fujifilm's grant program, the "GFX Challenge Grant Program," and the "KG+ DISCOVERY Award 2025 (Supported by Fujifilm)." In addition to selected photographic and video works by recipients of the GFX Challenge Grant Program, the exhibition will also feature "Welcome to Our Life in Kibera Slum" by SHIFT80, winner of the KG+ DISCOVERY Award 2025. The work documents the lives of young people living in Kibera, one of the largest informal settlements in Nairobi, Kenya, through years of ongoing engagement and exchange with the local community.

**Venue: Sfera**

17 Benzaiten-cho, Higashiyama-ku, Kyoto,  
Sfera Building West Side

Open: 4/18 Sat.-5/17 Sun. 12:00-19:00

Closed: Wednesdays

Admission: Free

Organizer: FUJIFILM Corporation

April 2, 2026

KG+SPECIAL S03

Momo Nakagawa  
**Clonal Images**

**Venue: HOSOO LOUNGE**

412 Kakimoto-cho, Nakagyo-ku, Kyoto

Open: 4/18 Sat.-5/17 Sun. 10:00-18:00

Closed: 4/28, 5/12

Admission: Free

Organizer: PARFUMS CHRISTIAN DIOR



©Momo Nakagawa

KG+SPECIAL S04

Deborah Royer for Le Labo Fragrances  
**Le Labo: The Essence of Slow Perfumery**

**Venue: LE LABO KYOTO MACHIYA**

206 Shimokorikicho, 2-chome, Nakagyo-ku, Kyoto

Open: 4/17 Fri.-5/17 Sun. 10:00-19:00

Open everyday

Admission: Free

Organizer: LE LABO



©LE LABO

KG+SPECIAL S05

Tamaki Yoshida, Kazuhiko Matsumura  
**Threshold: Images in Flux**

**Venue: RPS KYOTO PAPEROLLES**

603 Oimatsu-cho, Kamigyo-ku, Kyoto

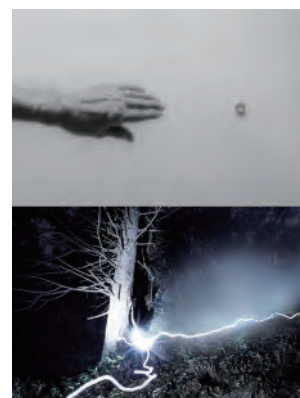
Open: 4/18 Sat.-5/10 Sun. 13:00-19:00

Open everyday

Admission: Free

Sponsor: The Kyoto Shimbun Printing

Curator: Yumi Goto



©Tamaki Yoshida & Kyoto Shimbun

KG+SPECIAL S06

Kazuma Obara  
**Unreel - Fragments of the Human Condition**

**Venue: Kyoto Museum for World Peace**

56-1 Kitamachi, Toji-in, Kita-ku, Kyoto

Open: 4/3 Fri.-7/11 Sat. 9:30-16:30

Closed: Sundays and the day following public holidays

Admission: Adults ¥400 / Junior & Senior High School Students ¥300 /  
Elementary School Students ¥200

Organizer: Kyoto Museum for World Peace

Special Special Sponsor: The Kyoto Shimbun Printing



©Kazuma Obara

April 2, 2026

KG+SPECIAL S07

## Shingo Goya En Route by ALBUM

Venue: THE NORTH FACE STANDARD KYOTO

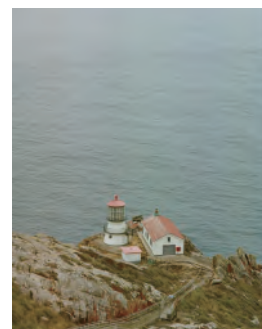
450 Sakai-cho, Nakagyo-ku, Kyoto

Open: 5/9 Sat.-5/17 Sun. 12:00-19:00 \*Sat.Sun.holidays: 11:00-19:00

Open everyday

Admission: Free

Organizer: GOLDWIN INC.



©Shingo Goya

KG+SPECIAL S08

## Himiko Chapuis AIDA

Venue: SEKAISOKO

144 Sujiya-cho, Shimogyo-ku, Kyoto

Open: 4/17 Fri.-4/24 Fri. 10:00-19:00

Open everyday

Admission: Free

Organizer : Penninghen



©Himiko-Chapuis\_AIDA

KG+SPECIAL S09

憂鬱な楽園

## Masanobu Ando

Venue: Gekkeikan Shinya (Former Okura Residence) 247

Minamihama-cho, Fushimi-ku, Kyoto

Open: 4/18 Sat.-5/2 Sun. 11:00-16:00

Closed: 5/6

Admission: ¥500

( ¥1,000 combined ticket with the Gekkeikan Okura Sake Museum)

Sponsor: Gekkeikan Sake Company, Limited

Production: KEN OFFICE INC, Q

Support: FUJIFILM Imaging Systems Co., Ltd.



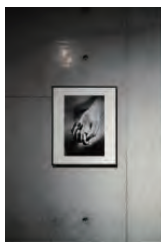
©Masanobu Ando

April 2, 2026

KG+SPECIAL S10

Daido Moriyama  
**Daido Moriyama**

Venue: node hotel  
Open: 4/15 Wed.-5/17 Sun. 14:00-17:00  
Open everyday  
Admission: ¥1,200  
Organizer: CANATA Ltd.  
Planned by: Hatch Ltd.  
With support of Voyages Co.



© CANATA Ltd.

KG+SPECIAL S11

Kyungtaek Lee  
**No man's land**

Venue: THE THOUSAND KYOTO  
Open: 4/18 Sat.-5/17 Sun.  
Open everyday  
Admission Free  
Organizer: AN INC.  
Cooperation: THE THOUSAND  
KYOTO

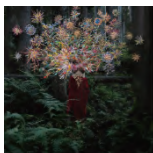


© Kyungtaek Lee

KG+SPECIAL S12

Takeshi Sumi, Harumichi Saito, Hajime  
Kimura, Yuxing Chen, Hayato Nishimura,  
Pavel Pazukhin  
**Commons Lounge —Wood, Brows-  
ing, Photography**

Venue: Karimoku Commons Kyoto  
Open: 4/14 Tue.-5/16 Sat. 12:00-17:00  
Closed: Sundays  
Admission: Free  
Co-organizers: Karimoku Furniture Inc., KG+



© Takeshi Sumi

KG+SPECIAL S13

timobarber (Curator) Various Artists  
**TINYVICES ARCHIVE EXHIBITION**

Venue: URBAN RESEARCH KYOTO  
Open: 4/17 Fri.-5/6 Wed. 12:00-20:00  
(Sat.Sun.holidays: 11:00-20:00)  
Open everyday  
Admission: Free  
Organizer: URBAN RESEARCH Co., Ltd.



© URBAN RESEARCH Co., Ltd.

KG+SPECIAL S14

Rin Naruse | Nana Hirose &  
Kazuma Nagatani  
**Teramachi kyogoku  
shopping street museum ×  
KG+ Collaboration**

Venue: Teramachi Kyogoku  
Shopping Street Museum  
Open: 4/1 Wed.-6/25 Thu.  
Open everyday  
Admission: Free  
Organizer: Teramachi Kyogoku  
Shopping Street Museum  
Co-organizer: KG+



© Teramachi Kyogoku  
Shopping Street Museum

KG+SPECIAL S15

Anne Murayama (Curator), Various Artists  
**頁の群れ  
– The Ephemere Photobook Exhibition**

Venue: Ogawa Coffee  
Sakaimachi Shop  
Open: 4/18 Sat.-5/17 Sun. 7:00-20:00  
Open everyday  
Admission: Free  
Organizer: Ephemere  
Co-organizer: OGAWA COFFEE CO., LTD.



© Kousuke Shimasaki

KG+SPECIAL S16

Yeou International Photo Festival  
**Dialogue of Earth**

Venue: Kyoto Station Building 7th floor, East square  
Open: 4/18 Sat.-5/17 Sun. 10:00-20:00  
Open everyday  
Admission: Free  
Co-Organizers: Kyoto Station Building Development Co., Ltd., KG+

# KG+ DISCOVERY Award Supported by Fujifilm

April 2, 2026

Launched in 2023, the KG+ DISCOVERY Award recognizes one outstanding artist selected from among all KG+ exhibitions (excluding KG+SELECT). Following an initial document review, several artists are shortlisted and invited to present their work publicly. The final award recipient will be selected during a public presentation session.

The winner receives:

- The opportunity to hold a solo exhibition
- A special prize: Fujifilm GFX100RF digital camera

Presentation & Award Announcement

Date: Friday, April 24, 2026 13:30–17:00 (Doors Open 13:00)

Venue: QUESTION 4F, Community Step (390-2 Shimomaruyacho, Nakagy-ku, Kyoto)

## KG+ DISCOVERY Award 2026 Finalists

• **Yuxing Chen**

Venue: THE PATH Studio

• **Hiroki Ando**

Venue: meda:loft

• **Victoire Thierrée**

Venue: Kansai French Institute

• **Wenjing Wu**

Venue: Oike Station Karasuma  
Oike Station Oike Gallery

• **Takashi Hokoi**

Venue: Baexong Arts

• **Rin Naruse**

Venue: MAGASINN KYOTO

• **PIDAN**

Venue: Gallery SUGATA

• **Naoko Suzuki**

Venue: GALLERY METABO

• **ScENE Project (Go Watanabe /  
Atsuko Yamazaki)**

Venue: Fushimi Port Sangoan

• **Raihan**

Venue: Nutshouse



© Rin Naruse

## KG+ INFORMATION CENTRE

For the 2026 edition, KG+ will establish a central Information Centre. Located on the first floor of the Kurochiku Makura Building, which also hosts the KG+SELECT Group Exhibition, the space will function as a lounge, bookstore, and event venue during the festival. The bookstore will offer photobooks by participating KG+ artists as well as related publications, alongside collaborative merchandise produced with festival sponsors.



© Takeshi Asano-KYOTOGRAPHIE

A variety of events will also take place at the venue, including:

- Artist Talk by KG+SELECT Artists
- KG+ MEETING POINT, independently organized events proposed by participating artists

Visitors exploring the many exhibitions throughout Kyoto are encouraged to begin their journey at the Information Centre.

---

### KG+ INFORMATION CENTRE

Venue: Kurochiku Makura Building

374-2 Mukadeya-cho, Nakagy-ku, Kyoto

Dates: Saturday, April 18 to Sunday, May 17, 2026 10:30–18:30

April 2, 2026

# Festival Information

Dates: Saturday, April 18 to Sunday, May 17, 2026.  
\*Some venues charge a fee; exhibition dates vary by venue.  
Venue: Various locations in Kyoto  
Organizer: KYOTOGRAPHIE  
Co-organizers: Kyoto City, Kyoto City Board of Education  
Supported by Kyoto Prefecture

## KG+SELECT 2026

Venue: Kurochiku Makura Building  
374-2 Mukadeya-cho, Nakagyo-ku, Kyoto  
Dates: Saturday, April 18 to Sunday, May 17, 2026 (Last Entry 18:00)  
Entrance: Free

## KYOTOGRAPHIE x KG+SELECT Award CEREMONY 2026

Venue: Ace Hotel Kyoto Ballroom  
Date: Sunday, April 19, 2026 19:30-21:00 (Doors Open 19:00)

## KG+ DISCOVERY Award 2026 Presentation

Venue: QUESTION 4F, Community Steps  
390-2 Shimomaruyacho, Nakagyo-ku, Kyoto  
Date: Friday, April 24, 2026 13:30-17:00 (Doors Open 13:00)  
Judging Method: Exhibition Judge & Public presentations.  
Award Announcement: Friday, April 24, 2026 (After Presentations)  
Supported by Fujifilm

# Sponsors & Partners

KG+2026 is made possible thanks to the generous support of the following sponsors.

Main Sponsors

**SIGMA FUJIFILM**

Sponsors

**DIOR** **LE LABO™** **京都新聞印刷** **penninghen** **THE NORTH FACE** **月桂野 GEKKEIKAN**

Partners

**SHASHIN KAGAKU** **karimoku** **UR** **URBAN RESEARCH** **OGAWA** **SUN COLOR** **京都駅ビル** **然花抄院**

Hotel Partners

**MAGASINN** **TUNE STAY** **NINII ROOM**

Media Partners

**STATION** **fisheye**

Organizer

一般社団法人 KYOTOGRAPHIE  
KYOTOGRAPHIE Organization Committee

Co-organizers

京都市  
Kyoto City  
京都市教育委員会  
Kyoto Municipal Board of Education

Support

京都府  
Kyoto Prefecture